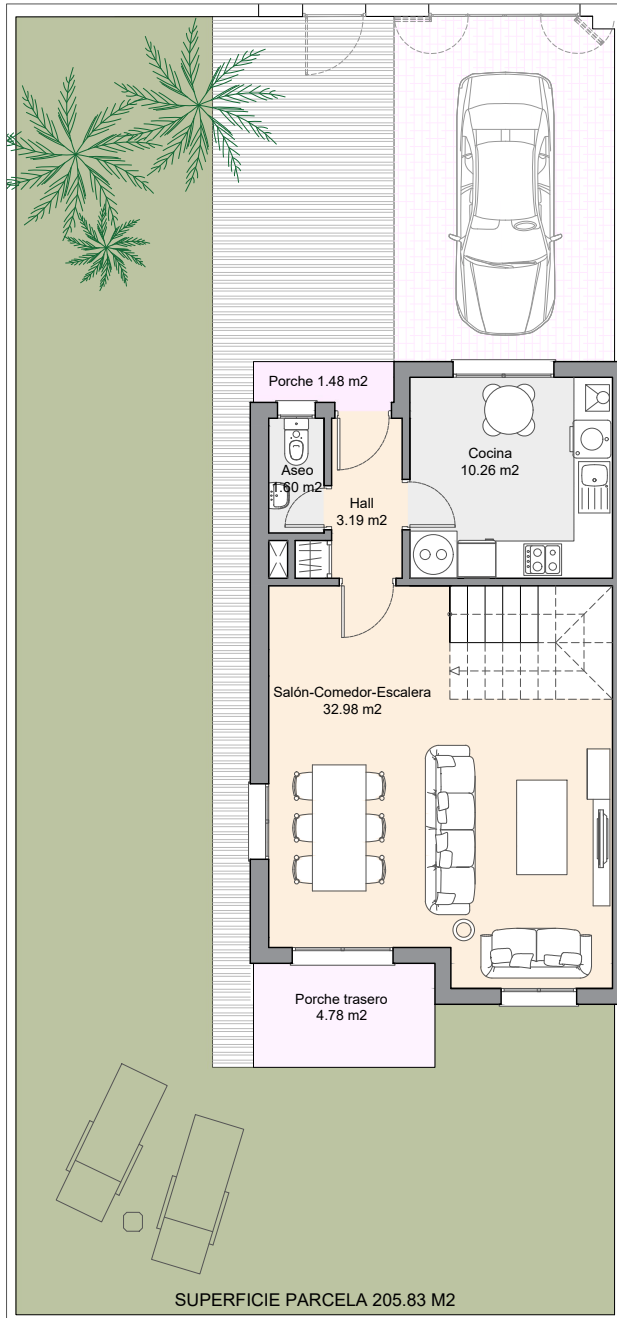
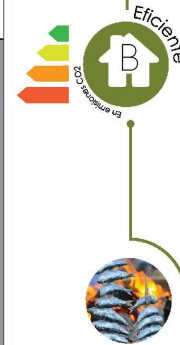


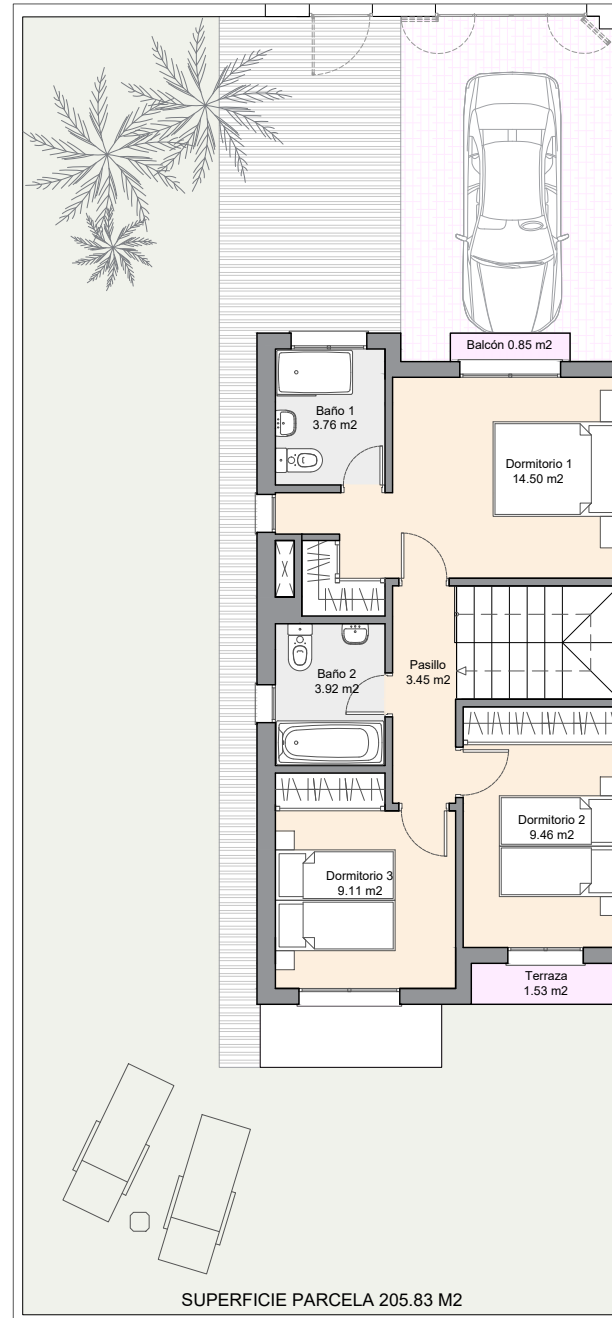


VIVIENDA 24 3 DORMITORIOS

SUPERFICIE CONSTRUIDA	117.16m ²
SUPERFICIE DE PARCELA	205.83m ²
SUP. UTIL S/D BOJA 218/8/2005	101.45m ²
SUP. CONSTRUIDA S/D BOJA 218/8/2005	126.38m ²



PLANTA BAJA



PLANTA PRIMERA

